



# The Bethel Newsletter

December  
2022

Porter, Minnesota

## December



Advent December 4



Advent  
December 11  
SS program 11:15

give him the name  
**JESUS**, because  
he **WILL SAVE**  
**HIS PEOPLE**  
from their sins.

Advent December 18

**JESUS,**  
**OUR**  
FULFILLMENT

Christmas Day  
December 25  
Morning worship 10:00



*Celebrate the Savior*

Christmas Eve  
Candle light  
Worship 5:30 pm

## *Blue Christmas*



*A Service of Hope  
and Remembrance*

*December 18, 2022, 6:00 pm,*

*Bethel Sanctuary*

### Inside this Issue

Birthdays/ Council info	2
Pastor's Message	3
Board Reports	4
Current & Upcoming Events	5
Monthly Financial Update	6
Workgroup Schedule	7
Calendar/ Bible Readings	8
Kids' Page	9



Bethel Lutheran Church is affiliated with the Southwest Synod of Minnesota of the Evangelical Lutheran Church in America.

God's Work. Our Hands.

Bethel Lutheran Church  
 P. O. Box 126  
 2429 County Hwy 16  
 Porter, MN 56280

Telephone: (507) 296-4658

Office Hours at the Church:  
 Wednesday —9:30 a.m. -12:00 p.m.

E-mail address: [bethel@bethelofporter.com](mailto:bethel@bethelofporter.com)

Website: [bethelofporter.com](http://bethelofporter.com)

Pastor Rev. Ellen Munter 296-4558 (home)  
 507-828-1000 (cell)  
 Email: [pastormunter@gmail.com](mailto:pastormunter@gmail.com)

#### Your Church Officers

President	Randy Kamrath	507 530-4417
Vice President	Mike Knutson	507-829-2767
Treasurer	Deana Moeller	507 530-5816
Financial Sec.	Josh Sumption	296-4497
Secretary	Sue Alley	507-530-1628

#### Deacons

Linda Bruns	296-4645
Tracy Wente	296-4623
Dawn Gawerecki	507 828-6087
Terry Dybsetter	296-4401
Sara Wollum	507 829-8513

#### Trustees

Jerome Bruns, Chair	296-4645
Brian Mamer	507 829-8708
Roger Longhenry	296-4422
Bob Merritt Jr	296-4436
Lance Moeller	507 530-5814

#### Board of Education

Paula Syltie	507 828-3587
Shelly Schrunk	507 530-3714
Anna Kamrath	507 530-5558
Amber Moeller	
Charlotte Wilke	507 829-4790
Katie Munter	
Lillie Wollum	

#### Custodian

Tom Gawerecki	507-828-6099
---------------	--------------



### December Birthdays

2<sup>nd</sup> Rebecca Kamrath  
 5<sup>th</sup> Sandy Appelen, Eric Wollum, Ethan Petersen  
 6<sup>th</sup> Pauline Anderson, Ethan Kack  
 7<sup>th</sup> Glenda Ackerman, Colton Syltie  
 9<sup>th</sup> Megan Sumption, Mason Tetrick  
 11<sup>th</sup> John Stone  
 15<sup>th</sup> Chad Blumeyer  
 16<sup>th</sup> McKenzie Kack  
 17<sup>th</sup> Cade Syltie  
 19<sup>th</sup> Mark Syltie  
 20<sup>th</sup> Lorraine Alleckson  
 25<sup>th</sup> Jerry Pridal  
 28<sup>th</sup> David Dybsetter, Hayden Noyes  
 29<sup>th</sup> Randy Anderson, Donna Stone,  
 Miranda DeBaere, Bryan Emery  
 30<sup>th</sup> Sara Wollum, Emma Stone

If you have any corrections or additions,  
 please contact the church office at 296-4658, or  
 email: [bethel@bethelofporter.com](mailto:bethel@bethelofporter.com) If your name  
 does not appear in the month of your birthday, it  
 means we don't have your birth date. Thanks!



*O come, O come Emmanuel  
and ransom captive Israel  
that mourns in lonely exile here,  
until the Son of God appear.*

This is the cry of Advent. Come, Lord Jesus! Come and rescue us! We are lonely. We are in bondage. We are dying. Paul speaks for us in Romans when he declares, ‘We know that the whole creation has been groaning in labor pains until now; and not only the creation, but we ourselves, who have the first fruits of the Spirit, groan inwardly while we wait for adoption, the redemption of our bodies.’ (Romans 8:22-23) Advent is a time of waiting.

Advent is a time of truth-telling as well. It’s a season of confession and honesty. Honesty about where we are in our lives. Honesty about where the world is. Honesty about where we are in our relationship with God. Advent is a penitential season – a time when we examine ourselves and repent of those things which need repenting. The lessons drive this home. We are warned to keep awake because we do not know when the master will return. John comes striding out of the wilderness admonishing us to “Prepare the way!” and proclaiming a baptism of repentance for the forgiveness of sins. How are we to be prepared if we have not examined ourselves and our lives? The repentance and forgiveness of sins John brings does not come without introspection.

Advent is a quiet time. A time of simplicity. If we are to examine our lives, if we are to repent, then we need to sit quietly in the presence of God for a while. This, of course, is the opposite of what we are told should happen in December. Every commercial, every advertisement, every cultural cue urges us to be busy. To cook and to clean and to shop. To attend parties and give them. To be ‘prepared’ – but not for the coming of our Lord and Savior in power and might, but for the opening of presents and the ideal of a perfect family Christmas. None of those things are wrong. God blesses your cooking and entertaining and family celebrations. But God also blesses your quiet time. Time spent with Him. Time spent in devotions, in Scripture, in prayer.

Finally, Advent is a time of hope. Indeed, Advent is all about hope. The hope of He Who is to come. Paul goes on in that Romans text to say this: For in hope we were saved. Now hope that is seen is not hope. For who hopes for what is seen? But if we hope for what we do not see, we wait for it with patience. (Romans 8:24-25). We who are lonely. We who are in bondage. We who are dying. Our hope lies not in ourselves and our abilities, but in God. In the promise of new life in Jesus Christ. Our hope lies in the power of God to transform lives and turn even devastating losses into affirmations of God’s constant love and mercy. May your Advent be one of prayerful, hopeful waiting for the coming of our Lord. Come, Lord Jesus!

*Our hope and expectation, O Jesus now appear;  
Arise, O Sun so longed for, O’er this benighted sphere.  
With hearts and hands uplifted, We plead, O Lord, to see  
The day of earth’s redemption That sets Your people free.*

In Christ,  
*Pastor Munter*

# CHURCH COUNCIL



## The Church Council and Board reports for November 2022

### Trustees

Trustee action taken:

Motion was made and second to pay bills.

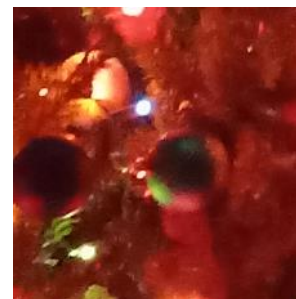
The trustees started work on the 2023 budget.

Dennis Nosbush was called to repair furnace at the parsonage. We will check to see if this has been repaired

Kitchen sink on counter was checked. All the drain pipes are open with no blockages.

The sink is small and people must use common sense when running water so it doesn't overflow into the counter electrical strip. .

Brian, Bob, Brian, Roger and Jerome



### Deacons

- Deacon for December: Terry Dybsetter
- Coins for community: Canby Food Shelf
- Communion Dates : December 4, 11, 24, 25
- Blue Christmas Service will be held on December 18, 6:00 pm. This is open to the public.
- Bible Seeds devotional continues on Sunday at 9:30—9:50 am.
- Christmas Eve worship: Hemnes worship 4:00 pm and Bethel worship: 5:30 pm. Sunday, Christmas Day worship is at 10:00 am with communion. Sunday, January 1, worship is at 10:00 am and celebrates the Naming of Jesus. Worship with Communion.

Terry, Sara, Tracy, Dawn and Linda

### Board of Education

They met November 13.

The Christmas Program is “Rufus and the very special baby”

Program practice is on November 20th, November 27, December 4, December 7, December 11 with the program on December 11. following worship.

The offering will go to the Canby Food Shelf and the Connection.

Multigenerational Sunday School activities during the SS hour on December 18.

A spaghetti (?) luncheon is being planned to follow the SS Christmas program.

Paula Syltie reporting

## **Bethel is looking for Sunday Drivers.**

Right now, we have two members who are unable to drive and so cannot attend worship here at Bethel. If you are interested in providing rides from Canby, please contact the church office or Pastor Munter,

## Spare Coins for Community



In December we are giving thanks by contributing our spare coins to the Canby Food Shelf

## Thanksgiving Tree

Please place your special gift(s) under the tree by December 4th worship so they can be delivered to Prairie Five for the recipient families.

*Two Thrivent Action Projects provided gifts and socks for the special children in this project.*

## **C**hristmas **W**orship



## **C**hristmas **E**ve **C**andlelight

### **W**orship with **C**ommunion

**5:30 pm Bethel**

**4:00 pm Hemnes**

## **C**hristmas **D**ay **W**orship

### **W**orship with **C**ommunion

**10:00 am Worship**

# Monthly Financial Update

## Miscellaneous Revenues

The Revenues taken into account are all weekly and holiday offerings as well as special offerings designated to the general account such as Fuel, Missions, and Food Shelf Offerings. This comparison is only for Revenues and Expenses associated with Bethel's responsibility for our parish budget, meaning checks from Hemnes Lutheran Church are not included in the Year to Date Revenue and their 25% share of our

parish budget is not included in the Year to Date Budgeted Expenses. This comparison also does not take into account Refunds and Reimbursements or Savings Reimbursements. These sources of revenue are normally received to pay expenses that are not a part of Bethel's operating budget, so are not used to make comparison to our budgeted expenses.

The Year to Date difference will show on a monthly basis if we are receiving sufficient offerings to cover our budget, or if we are behind. The running total for each month will be in a Year to Date total, not a monthly total.

If it is necessary to borrow money from Savings Reserves to fund the operations of Bethel, the amount will be denoted in the Cash Reserves Expended column. If funds are repaid to the Savings Reserves during a surplus, the repayment will be denoted in the Cash Reserves Repaid column. Reserves Expended and Reserves Repaid are not represented in the Revenues and Expenses columns of this report.



**Don't forget** that you can donate to Bethel just by shopping at Amazon. Click on this link: [smile.amazon.com](https://smile.amazon.com) or type it into your browser, and choose "Bethel" as your charity. There are many, so keep going and you will find a "Bethel" in Porter, MN. That's us! You can change your bookmark for Amazon to be [smile.amazon.com](https://smile.amazon.com) so it comes up automatically. Then when you shop just look for the "eligible for AmazonSmile" in the product details page and you're good to go!

**Please note: Bethel has used \$11,000 in cash reserves since May.**

Total Budgeted Expenses:	\$	126,671.81	*Includes all Bethel and Parish related expenses
Monthly revenue required to meet budget:	\$	10,555.98	

## Year to Date Actual Revenue and Budgeted Expenses Comparison-

This report is based on budgeted expenses divided evenly for each month of the calendar year. Actual expenses per month vary greatly. This analysis is to be used as a guideline, and not a full representation of the full financial health of Bethel Lutheran Church.

This report now includes revenues received from Hemne Luterhan Church as they are applied to all expenses related to the Bethel-Hemnes Joint Parish.

	Total Revenue for Month	Year to Date Revenue	Year to Date Budgeted Expense	Year to Date Difference: shortfalls shown as negative numbers	Cash Reserves Expended	Cash Reserves Repaid	Reserves Repaid Notes
January	\$8,039.85	\$8,039.85	\$10,555.98	-\$2,516.13			
February	\$9,784.73	\$17,824.58	\$21,111.97	-\$3,287.39			
March	\$8,770.48	\$24,674.56	\$31,667.95	-\$6,993.39			
April	\$10,459.73	\$35,009.29	\$42,223.94	-\$7,214.65			
May	\$8,622.45	\$43,631.74	\$52,779.92	-\$9,148.18	-\$5,000.00		
June	\$6,040.58	\$49,672.32	\$63,335.91	-\$13,663.59	-\$2,000.00		
July	\$10,236.24	\$58,805.81	\$73,891.89	-\$15,086.08			
August	\$12,074.48	\$71,983.04	\$84,447.87	-\$12,464.83			
September	\$5,044.22	\$77,027.26	\$95,003.86	-\$17,976.60			
October	\$4,291.99	\$81,319.25	\$105,559.84	-\$24,240.59	-\$4,000.00		

# Bethel Workgroup Schedule

## Altar Workers for Sundays in December

Carmon Mamer  
Charlotte Wilke

## Altar Workers for Sundays in January

Linda & Jerome Bruns  
Ken & Carol Jeremiason

### Group #4

Terry and Dan Dybsetter	296-4401
Anna Noyes	507 828-7366
Phyllis and Harvey Melrose	223-5512
Dawn and Tom Gawerecki	507-828-6087 or 507-828-6099
Deanna and Lance Moeller	507 530-5814 or 507 530-5816
Gail and Marlo Sumption	507 828-2860
Ralph Dovre	223-7771
Joy and Randy Schmidt	224-2286
Hattie and Jim VanDerostyne	296-4563
David Dybsetter	296-4648, 507 828-1397
Chad Moeller	507-828-3536
Danny VanDerostyne	507-829-0070
Kayla and Brady Watson	507-829-6745
Barb Pronk	507 401-3263, or 507 828-1404



*\*Please note: The first person or couple on the list are chair for the next funeral.*

## Sunday School Program

“Rufus and the very special baby”

Practice: December 4, 7 (6:00 pm with pizza) & 11.

Program: December 11. following worship.

Program offering will go to the Canby Food Shelf and the Connection.



Children's Program

### Worship Schedule

Our worship will be live streamed on our Facebook page. Bulletins are e-mailed weekly or available for pickup in the narthex.

[www.facebook.com/bethelofporter](http://www.facebook.com/bethelofporter)

Other resources are available on our website. [www.bethelofporter.com](http://www.bethelofporter.com)

### Coming Events

#### Worship with communion

**December 4, 11, 24, & 25**

Sundays, Worship

10:00 am at Bethel

Sundays 8:30 am Hemnes

Sunday School 9:00 am

Confirmation 6:30 pm Wednesday's

Church Council/Boards:

Monday, December 19th, 7:30 pm

### Christmas Eve Candlelight

#### Worship with Communion

**5:30 pm Bethel**

**4:00 pm Hemnes**

### Christmas Day

**10:00 am**

The attached QR code can be used to directly access the online giving form for Bethel



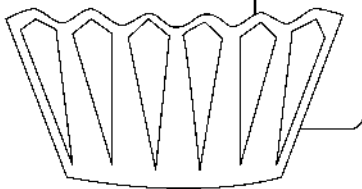
### Readings for the month of December

December 4 Advent 2	December 11 Advent 3	December 18 Advent 4	December 24 Christmas Eve	December 25 Christmas Day
Isaiah 11:1-10	Isaiah 35:1-10	Isaiah 7:10-16	Isaiah 9:2-7	Isaiah 62:6-12
Psalms 72:1-19	Psalms 146:5-10	Psalms 80:1-19	Psalms 96	Psalms 97
Romans 15:4-13	James 5:7-10	Romans 1:1-7	Titus 2:11-14	Titus 3:4-7
Matthew 3:1-12	Matthew 11:2-11	Matthew 1:18-25	Luke 2:1-14	Luke 2:1-20



# Light the way

Make some Christmas candles to remember Jesus, the Light of the world.



**What you need:**

- Unlined white notecards
- Hot glue (and adult help)
- Yellow tissue paper
- Mini muffin liners
- Clothespins

**What you do:**

1. Roll a notecard from side to side into a "candle" tube. Secure with glue.
2. Insert a piece of tissue paper "flame" in one end.
3. Glue the other end to a muffin liner. Then glue the liner to a clothespin.
4. Repeat to make many paper candles. Pin them to the branches of a Christmas tree.

# Kids Page



## Symbols of the *season*

Many traditional decorations convey the meaning of Christmas.

*Directions:* Use the picture clues to the right to complete the words. Then write the boxed letters in order to complete 2 Corinthians 9:15, NIV.



- shepherd's staff      \_ □ □ \_ \_ \_ □
- tree that keeps its leaves      \_ \_ \_ □ \_ \_ \_
- shines to lead the way      \_ \_ \_ □
- green for eternal life,  
red for Jesus' blood      □ \_ \_ \_ & \_ \_ □ □ \_ \_
- sounds to announce  
good news      □ \_ \_ \_
- has no beginning or end      \_ \_ \_ □ \_

Th □ □ ks b □ to □ od fo □ □ is  
indesc □ □ ba □ le gif □ !

2 CORINTHIANS 9:15, NIV

Answer: candy cane, evergreen, star, holly & berries, bell, wreath; Thanks be to God for his indescribable gift! 2 Corinthians 9:15, NIV



THE NEWSLETTER FOR THE MEMBERS AND FRIENDS OF

## BETHEL LUTHERAN CHURCH

P.O Box 126

2429 Co. Hwy. 16

Porter, MN 56280

### Bethel Lutheran Newsletter

December 2022

*Bethel Worship, Sunday 10:00 am*

*Sunday School 9:00 am*

*Christmas Eve Candlelight Worship*

*5:30 pm*

*Live streamed on the Facebook*

[www.facebook.com/bethelofporter](http://www.facebook.com/bethelofporter)

[www.bethelofporter.com](http://www.bethelofporter.com)

